



## For more Decorating Techniques & Tips

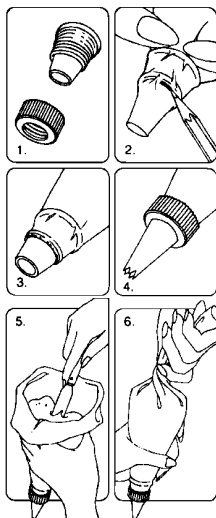
Visit our website at [www.wilton.com](http://www.wilton.com) -  
Learn To Decorate - Basic Decorating Lessons.

### Using Your Decorating Bag and Coupler

You can make many different designs with just one decorating bagful of icing by using the Wilton Featherweight or Disposable Decorating bags and coupler and changing decorating tips.

Just follow these steps:

1. Screw ring off coupler to expose series of tiny threads 1/2 in. above coupler base.
2. Force coupler base as far down into decorating bag as it will go. Then mark where bottom thread of coupler shows through bag; remove coupler and trim bag at pencil mark with a pair of scissors.
3. Reposition coupler in bag and push end through opening to expose bottom two threads.
4. Position decorating tip over coupler and screw ring in place to secure. To change tips, unscrew ring, replace tip and replace ring.
5. To fill, cuff open end of bag over your hand and insert icing with a spatula. Fill bag no more than half full.
6. To close, unfold cuff and twist top of bag shut. Hold twist between your thumb and forefinger. Note: You can eliminate any air bubbles that may have formed by squeezing bag gently over icing bowl until air is released. Important: Be sure to wash the Featherweight bag in hot soapy water, then rinse and dry after every use. A degreaser can make clean-up easier.



### Using Parchment Bags

Parchment bags made from parchment paper triangles give you more versatility and the convenience of one-time use. Follow package directions. To "pipe-in" using a cut parchment bag, cut the point of the bag to desired opening.

### Decorating With Wilton Icings

**Wilton Frosting Mix:** You will need 2-3 packages of Creamy White Icing Mix. To prepare, follow package directions. Each package makes about 2 cups icing. Excellent for tinting any shade required. If you're using another type of frosting mix, you will need three 15.4 oz. packages of the creamy vanilla type that will frost two 8 in. or 9 in. layers. For each package of frosting mix, use four less teaspoons water than package directs. Each package makes about 1 3/4 cups icing. Do not refrigerate icing before decorating. Cake may be refrigerated after it is iced.

**Wilton Ready-to-Use Decorator Icing:** You will need approximately 2-3 cans of our delicious white icing. Each 16.5 oz. can holds about 2 cups. It's ideal for all of your decorating needs - frosting, decorating and flower making.

### Making Buttercream Icing

The thick, but creamy texture of this flavorful icing makes it ideal for decorating\*. For best results, keep icing bowl in refrigerator when not in use. It can be refrigerated in an airtight container for up to 2 weeks. Rewhip before using. YIELD: 3 CUPS.

- |  |                                     |
|--|-------------------------------------|
| 1/2 cup solid vegetable shortening         | 2 tablespoons milk                  |
| 1/2 cup butter or margarine                | 1 tsp. Wilton Clear Vanilla Extract |
| 4 cups (1 lb.) sifted confectioners' sugar |                                     |

Cream butter and shortening with electric mixer. Add vanilla. Gradually add sugar, one cup at a time, beating well on medium speed. Scrape sides and bottom of bowl often. When all sugar has been mixed in, icing will appear dry. Add milk and beat at medium speed until light and fluffy.

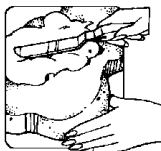
\*To thin for icing cake, add a small amount of light corn syrup.

### Coloring Your Icing

Wilton Icing Colors are best for decorating because they are concentrated and give the deepest, most vivid icing colors. Use a toothpick to swirl icing color into icing, then mix well. Add color gradually until you get the icing color you desire.

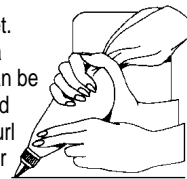
### Icing Smooth With A Spatula

With a spatula, place icing on cake. Spread icing over area to be covered. For a smooth effect, run spatula lightly over the icing in the same direction, blending it in for an even look. For a fluffy effect, swirl icing into peaks using the edge of the spatula.



## Let's Practice Decorating

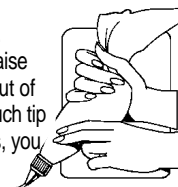
Use decorating bag and coupler as directed in this booklet. Practice each of the following techniques on the back of a cookie sheet with white icing. The practice decorations can be scraped off the cookie sheet back into the mixing bowl and rewhipped for use again. To hold bag while decorating, curl fingers around bag with the end twist locked between your thumb and index finger. This forces the icing down into the tip each time you squeeze. Apply an even pressure with all four fingers and icing will come out of the tip until you stop squeezing. As you decorate, periodically twist the bag down further, forcing the icing down into the tip. Use fingers of other hand to guide as you decorate.



For more about decorating, refer to the Wilton Yearbook of Cake Decorating.

### To Make Outlines

Use tip 3. Hold bag at a 45° angle and touch tip to surface. Squeeze at starting point so that icing sticks to surface. Now raise the tip slightly and continue to squeeze. The icing will flow out of the tip while you direct it along surface. To end an outline, touch tip back to surface, stop squeezing and pull away. If icing ripples, you are squeezing bag too hard. If icing outline breaks, you are moving bag too quickly or icing is too thick.



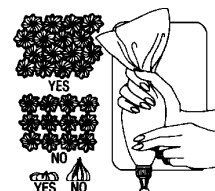
### To Outline & Pipe-In

After outlining, using the same tip, squeeze out rows of lines to fill area. Pat icing down with fingertip dipped in cornstarch or smooth with dampened art brush.



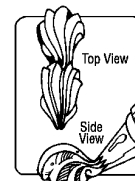
### To Make Stars

Use tip 16. Hold bag straight up and down (see illustration) with tip 1/8 in. above surface. Squeeze until a star is formed, then stop pressure and pull tip away. Your stars will be neatly formed only if you stop squeezing before you pull the tip away.



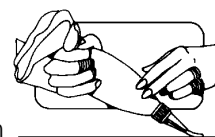
### To Make Shells

Use tip 21. Hold decorating bag at a 45° angle, slightly above surface with end of bag pointing towards you. Squeeze until icing builds up and fans out into a base as you lift tip slightly. Relax pressure as you lower tip until it touches surface. Stop pressure and pull tip away without lifting tip off surface to draw shell to a point. Practice this procedure until you can produce a clean shell shape. To make a row of shells, rest head of one on tail of preceding shell. For larger shells, increase pressure; for smaller shells, decrease pressure.



### To Write or Print

Use tip 3. Hold bag at a 45° angle to surface of cake with bag toward your right so that fingers face you (see illustration). As you write or print, always work from left to right. To write, squeeze out icing with a steady, even pressure as you glide tip along surface in a smooth continuous motion. Keep wrist straight; use your arm, not your fingers to form each line, letter or word. Tip should lightly touch cake at all times. To print, touch tip to surface and then raise tip slightly as you continue to squeeze. The icing will flow out of the tip while you direct it along surface. Stop squeezing and touch tip to surface to end each stroke of printed letter, then lift tip and pull away.



**Wilton Method  
Decorating Classes**  
Discover The Fun  
of Cake Decorating!

### Find Classes Near You!

In U.S.A., Call **800-942-8881** Or visit  
our website at [www.wilton.com](http://www.wilton.com)  
In Canada, call (416) 679-0790 x200 Or E-mail:  
[classprograms@wilton.ca](mailto:classprograms@wilton.ca)

